

FOCUS ON WASTE MANAGEMENT & ENERGY GENERATION

We help our clients realise the substantial commercial opportunities that managing waste as a resource offers.

Our team regularly advise on the legal aspects of resource management and energy from waste projects; from the design, finance, construction and operation of local authority and merchant facilities through to the supply and offtake of resources from waste generators and aggregators, as well as ongoing operational and maintenance needs.

We regularly advise on both collection and disposal arrangements, including AD, energy from waste, biomass, plastic and material recovery solutions. Our experience spans a range of waste streams, from municipal and commercial through to agricultural, sewage and hazardous; as well as different treatment technologies such as advanced conversion technology (gasification and pyrolysis), incineration, and AD.

We work with organisations across the sector including energy from waste companies such as Biffa, Viridor, Grundon, Cogen, Ixora Energy and Downing LLP, and the critical funders and investors helping to get projects off the ground. We also work with local authorities on their collection and disposal arrangements.

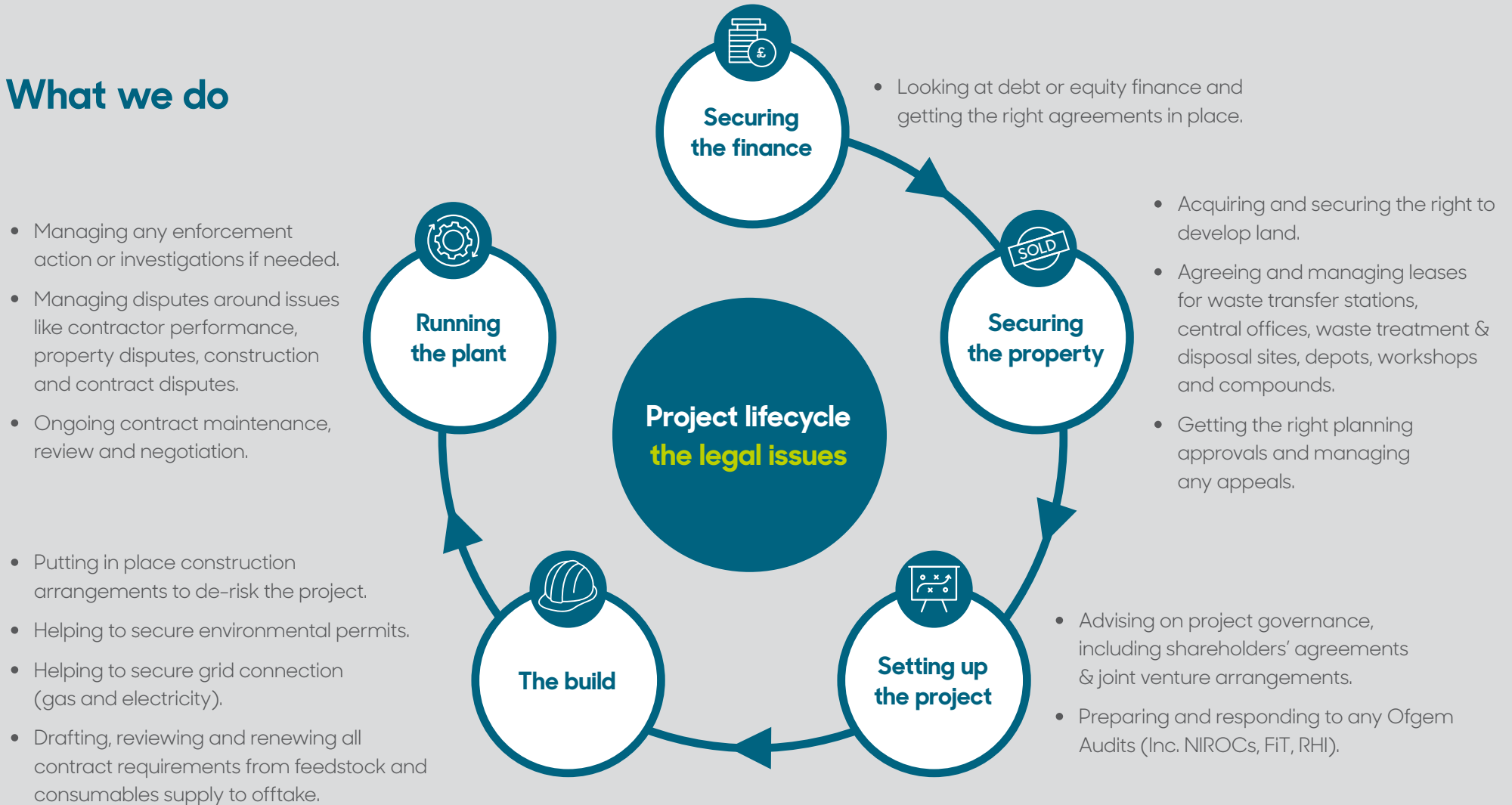
'We have advised on in excess of £8bn waste and resource management projects.'



ashfords

Ashfords LLP
ashfords.co.uk

What we do



Our experience:

NORTH YORKSHIRE COUNTY COUNCIL

Advising on £350 million energy from waste project including AD. The project will treat up to 320,000 tonnes of waste per annum and will divert at least 90% of residual waste from landfill.

GLOUCESTERSHIRE COUNTY COUNCIL

Ongoing advice to the UBB waste joint venture for the construction (including the unwrapped sub-contracts) of the energy from waste project asset and contracts. This included advising the sponsor on junior debt and on the close out of sub-contracts through the final account stages and defect rectification periods.

TORBAY COUNCIL

Advising in relation to circa £400million direct services and waste joint venture scheme, which utilised the competitive dialogue procedure. Ashfords was responsible for leading the procurement process, including the provision of strategic advice and assistance on managing the competitive dialogue process and developing the evaluation framework.

BIFFA

Advising Biffa on numerous procurement bids for local authority collection and disposal contracts.

Our team



Brian Farrell
Partner

b.farrell@ashfords.co.uk
Direct +44 (0)7515 329 623



Jonathan Croley
Senior Associate

j.croley@ashfords.co.uk
Direct +44 (0)1392 334109



Carl Thompson
Partner

ca.thompson@ashfords.co.uk
Direct +44 (0)117 937 8669



Mark Manning
Partner

m.manning@ashfords.co.uk
Direct +44 (0)1392 333882



Emma Warren
Partner

e.warren@ashfords.co.uk
Direct +44 (0)1392 333809



Stephanie Gillam
Senior Associate

s.gillam@ashfords.co.uk
Direct +44 (0)1392 333679



Stephen Humphreys
Senior Associate

s.humphreys@ashfords.co.uk
Direct +44 (0)117 321 8002



Kim Hawkins
Partner

k.hawkins@ashfords.co.uk
Direct +44 (0)20 7544 2431



Clare Brewer
Partner

c.brewer@ashfords.co.uk
Direct +44 (0)1392 333991



Ben Derrington
Legal Director

b.derrington@ashfords.co.uk
Direct +44 (0) 117 321 8014



Lucy Woods
Partner

l.woods@ashfords.co.uk
Direct +44 (0)1392 333977